

Master of Public Management & Administration (MPMA) Course



Master of Public Management and Administration Course

Graduate School of Business

RIKKYO UNIVERSITY

Ikebukuro, Tokyo, Japan

Dean's Message



Kazunori Yamaguchi, Ph.D.
Dean
Graduate School of Business

We wholeheartedly welcome the students for our new Master of Public Management and Administration Course in the Master of International Management Program at the Rikkyo University.

Rikkyo's tradition is academic freedom, and we welcome students and researchers with different backgrounds as we believe that diversification will help us understand and appreciate our differences and enrich not only our campus but also environment beyond our campus.

Founded by an Episcopalian missionary in 1874, Rikkyo University is one of the oldest and most competitive, sought after private universities in Japan. In 2018, we celebrate the 100th anniversary of Ikebukuro Campus.

In recognition of the Rikkyo's unique educational initiatives, the Ministry of Education, Culture, Sports, Science and Technology-Japan selected the university as one of the Top Global University Project in 2014. Rikkyo University is well known in the research fields and our faculty members sit on the boards of academic societies and associations.

We look forward to welcoming you to Rikkyo's unique experiences of learning from enthusiastic scholars and from each other.

MPMA Course

The Master of Public Management and Administration (MPMA) Course is an English-medium two-year Master's program. It is designed particularly to nurture and develop the student's ability to analyze, formulate, manage and evaluate policies and programs in the fields of public management and economics. In addition, MPMA students may take a variety of business-related courses offered by the Master of International Business Course in the Graduate School of Business. The MPMA Course is particularly suitable for those individuals who are working in government and public sectors, and those interested in careers in government, NGO/NPOs, international organizations or Ph.D. programs after graduation.

In the first year, MPMA students will take required courses and build up their knowledge, theories, and skills. Students also learn to utilize various computer software and databases used commonly by economists and various international organizations. From the second semester on, students take a variety of elective courses. A mix of elective courses will help students develop a well-balanced set of skills and points of view. In the second year, students write a master's thesis under close supervision of a supervisor.

Upon successfully completing a minimum of 30 credits and a quality master's thesis, students will be awarded a Master of Public Management and Administration degree.

After graduation, our students are expected to play active leadership roles in their chosen fields.

Considering the ongoing situation the MPMA course is taught in a manner that enables all students to participate in classes equally. Some courses may be instructed using a combination of on-demand, online and face to face group work teaching methods, however, students are assured of the option to participate online when there is an unavoidable circumstance.



Facilities

Library

In November 2012, the Ikebukuro library opened its doors after unifying four libraries located on the Ikebukuro campus.

It can house more than two million books, has a large seating capacity for more than 1,530 people, and is one of the largest university libraries in Japan.

The Ikebukuro Library offers strong support for learning, education, and research activities by meeting diverse range of needs, combined with its ease of use.



Center for Japanese Language Education

Rikkyo's Center for Japanese Language Education offers a well-designed sequence of Japanese language courses to our students. We offer beginner-level courses, where students who have not studied Japanese before can be enrolled, up to advanced-level courses. There are light-loaded and normal-loaded tracks at the beginner's level. The Center also offers Japanese Language courses as well as Japanese Culture courses, conducted in English, to provide students with opportunities to learn about Japanese language and various cultural aspects of the Japanese language.

International Office

International Office establishes policy regarding activities for international exchange, and oversees the planning and implementation of international exchange programs. The office also gives various supports for international students including visas.

On-campus Medical Clinic and Counseling Services

Ikebukuro campus has an on-campus clinic for students, faculty and staff members. Students can get general medical treatment free of charge, provided that they have joined the National Health Insurance and Rikkyo Student Mutual-Aid Insurance. Counseling services are also available.

MPMA Student Room

MPMA also provides the Study Rooms to support student's study and research. Such software as GAUSS and STATA are installed in the PCs.



Cafeteria/Restaurants

There are a number of cafeterias and restaurant on the Ikebukuro campus. In June 2022, we newly provided the cafeteria for Muslim in the Ikebukuro campus which has obtained the Halal authentication.

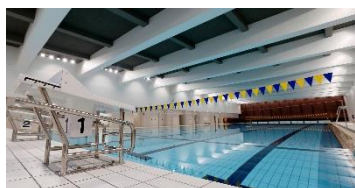


Media Center

The Media Center provides support for educational research use of computers and multimedia equipment.

Paul Rusch Athletic Center

The new athletic center offers a 50-meter heated pool, tennis courts, gymnasiums, a training room and other excellent facilities.



St. Paul's Plaza (bookstore, travel agent)

Students can purchase textbooks, books and stationery supplies at a discount price. There is also a travel agency to assist domestic as well as overseas travels.

Places of Worship

There are a number of places for worship in Ikebukuro and its vicinity for various religions.

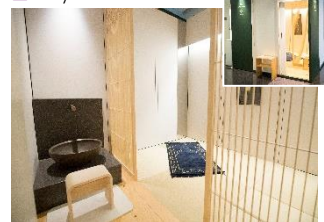
The Chapels on the Rikkyo campuses offer daily prayer services and regular mass. Various social activities are organized by the Chapels.

There is a prayer room on the Ikebukuro campus.

We also provide a prayer room on the Ikebukuro Campus which can be used by anyone, regardless of their religion.



Prayers room



Voices from MPMA Students

PHAM VAN TRUONG (Class of 2021)



Studying abroad in Japan under the spread of COVID-19, everything is beyond my expectation. Having been confronted with an unprecedented and uncertain situation brought by the pandemic, Rikkyo University offered great support to students such as Learning Environment Scholarship, internet equipment, software license that serve our best convenience in studying.

It is also an opportunity to prove how excellently world-class faculty members adjust their teaching styles and how considerate professional MPMA office staff are. Interestingly, we receive more practical lectures even the classes are conducted entirely online.

Although social distance measures are applied, we are still able to access Rikkyo Library - one of the largest university libraries in Japan, fully equipped study rooms, modern sports facilities, instrumental field trips, and so on. I am pretty sure I spend my fruitful academic life with an incredibly rewarding experience at Rikkyo University.

MONTCHEBOLATAN NICOLE CHABI (Class of 2020)



Out of all my experiences studying, Rikkyo University has been till date the best university ever attended in my life. The staff and faculty are amazing. My senseis (as I love to call my professors) were highly talented, sociable and understandable. The library and the study room are calm places where we could concentrate to study.

Though each course requires hard work and discipline to achieve excellence, the MPMA program is very flevible and gives the opportunity to choose from a range of courses with the guidance of the supervisor.

I had the chance to be part of a multinational and multicultural class which enhanced my open-minded spirit and fostered my sense of diversity, and through the class I could build up the great relationship with brilliant classmates.

I also joined some volunteering activities which were offered by The international office such as green tea ceremonies, games activities and many others to improve student's integration. Rikkyo is not just a university, it is a life building community and I am forever grateful to God for having been part of this community.

AJI WITRI MUKTI (Class of 2019)



I always dream to study in Japan. Studying at Rikkyo University made my dream come true. Rikkyo University such a beautiful place to study supported with the high technology facilities, such as a huge and well-organized library, a comfortable study room equipped with PC's, four cozy canteens, professional sports facilities and the most important for me as a Moslem a prayer room. This campus creates a conducive environment to fulfill my need as a student with a kind and helpful teacher and staff. Moreover, the staff will guide and help you with thoughtful service. Our teachers are the experts in their field study, especially in the MPMA program. The course not only conducting an indoor class but also in outdoor by field trip program from the course or campus. Rikkyo University satisfies my expectation about the ideal campus to learn. I am proud to be a part of Rikkyo University.

About Rikkyo University

Rikkyo was founded in 1874 by an American Bishop, Channing Moore Williams, and has a long history of excellence in education and research, which, combined with substantial investment in state-of-the-art information technology and teaching facilities, has earned a reputation as an outstanding educational institution and one of the most sought-after universities in Japan. Today, Rikkyo enrolls over 19,000 undergraduate and 1,200 graduate students in its ten colleges and fourteen graduate schools. Rikkyo usually has over 700 overseas students from various parts of the worlds.

Rikkyo University has two campuses: one in Ikebukuro, Tokyo and the other in Shiki, Saitama-prefecture which borders on northwest Tokyo. The main campus is located in Ikebukuro, one of the largest commercial and transportation hubs in the heart of metropolitan Tokyo. And our Ikebukuro campus, where the Master of Public Management and Administration Course students will study, is located only a few minutes-walk from Ikebukuro-Station.

In recognition of the Rikkyo's unique educational initiatives, achievements and potential, the Ministry of Education, Culture, Sports, Science and Technology-Japan launched the Top Global University Project and selected Rikkyo as one of the 37 universities for special funding in 2014. The project lasts for 10 years.

Access



- Narita - 〇 Ikebukuro
90 min. (JR Narita Express)
60 min. (Keisei Sky L./Yamanote L.)
- Haneda - 〇 Ikebukuro
50 min.



☞ For more details

Maps & Directory

<https://english.rikkyo.ac.jp/map/index.html>



Title list of Master's Thesis (Rikkyo MPMA Course 2019-2022)

* You can get more information at our website.
(https://mpma.rikkyo.ac.jp/research_n_faculty.html)

2019	The Effect of Intergroup Contact on Indigenous People's Perception of Transmigrants-: Case Study of West Kalimantan Province of Indonesia
	The Impact of Micro Finance Initiatives on Gender Relations- A Case of the Copper belt Province in Zambia
	Explaining Voting Patterns in Zambia's 2016 Presidential Elections
	Asymmetric Pass- Through of Fuel Price to Food Price: The Case of Nepal Foreign Aid and Foreign direct Investment: Evidence from Panel Analysis
	Renewable Energy Consumption in Emerging Countries and Developed Countries: A Panel Cointegration Analysis
	Spatial Dimensions of Economic Growth, Redistribution, and Poverty Reduction during the Yudhoyono Period in Indonesia
	Targeting and the Impact of National Health Insurance Program in Indonesia
	Do Negotiations Lead to Price Decline in Government Procurement? The Effect of Frequency of Negotiations between Buyers and Sellers on the Transacted Price of Vehicles in Public Sector in Indonesia
	Why Non Poor Households Have Received Conditional Cash Transfer: An Analysis Based on 2013, 2014 and 2017 SUSENAS.
	The Effect of Ethnic Diversity on Expenditure Inequality in Indonesia
	Explaining Indonesia E-Participation Variation and How to Improve it
	Inequality and Political Trust in Indonesia Technical Efficiency Analysis of Indonesian Small and Micro Industries: A stochastic Frontier Approach
	Spatial Distribution of the Household Expenditure of Fuel Transportation Product in North Sumatera Province
	Does Female Politician Affect Policy Outcomes in Indonesia?
Demand Analysis for Fish in Indonesia	
2020	Frontier Analysis of Vietnamese Electronic Manufacturing Firms: Using Bootstrap Data Envelopment Analysis Model
	Asymmetric Responses of Stock Prices to Oil Prices in Vietnam: Any Difference between Energy-Demanding and Energy-Supplying Sectors?
	Understanding Residents Attitudes Toward Public Works Projects in Vietnam: Case Study of the National Road Project in Hanoi
	Citizen's Service Satisfaction, Regional, Affiliation, Interpersonal Trust and Trust in Government in the Republic of Benin
	A non-parametric bootstrap data envelopment analysis for Nepalese agricultural farming households
	Trade Openness and Government Revenue Diversification: Some Evidence From Resource-Dependent Countries
	Open Burning Behavior at Household Level in Indonesia
	Forest Fire in Indonesia 2015-2018
	Electricity-Saving Behaviors of Household in Indonesia
	Export Behavior and Firm Productivity in Micro and Small Manufacturing Firms in Indonesia: Limited Dependent Model Approaches
	Does Mayor's Previous Career Matter?
	Analysis of Household Poverty Status in Riau Island Province
	Examining the gateway hypothesis of drug use and individual characteristics: The case of Indonesia
	Household Head Education Attainment And The Urban-Rural Expenditure Inequalities in Jokowi's First Term
Does Damage from Natural Disaster Affect Child Labor? Evidence from Indonesia	
2021	How Prosocial Motivation and Perception of Job's Usefulness Affect Job Satisfaction and Turnover Intention among Employees in Vietnam.
	People's Attitude to Compulsory Land Acquisition for Socioeconomic Development in Vietnam
	A Non-Parametric Frontier Analysis with Firm-Level Data in the Vietnamese Garment Sector
	Agricultural Tourism Demand of Citizens for Rural Farming Areas in Vietnam
	Determinants of Net Micro, Small, and Medium Enterprise (MSME) Formations in the Philippines
	Shadow Banking and House Price in China: Some Evidence from the Province-Level Data
	Bribery to Bureaucrats: Experimental Evidence from Nepal
	Examining Voters' Attitude toward Female Candidate in Local Executive Elections in Nepal:
	Survey Experimental Analysis
	Return to Education by Ethnicity in Indonesia: Instrumental Variable Approach
	Credit and Household Expenditure in Indonesia: Bank or Non-Bank?
	The Role of Information and Communication Technologies (ICT) Development on Inequality in Indonesia
	Asymmetric Response of Unemployment Rate to an Export Shock in Indonesia: Does Educational Attainment Matter?
	Interregional Display and Spatial Autocorrelation of Access to Water and Sanitation in Indonesia
Job Informality and Gender Inequality during COVID-19 Pandemic: The Risk of Income Loss, Working Hours Loss, and Job Loss	
Measuring the Efficiency and Productivity of Regional Water Utility Company (PDAM) in Indonesia from 2012-2016	
2022	GENERATION Z'S POINT OF VIEW ON OVERTIME WORK AND WORKPLACE SELECTION: EXPERIMENTAL EVIDENCE FROM INDONESIA
	EVALUATING IMPACT OF PROVINCIAL LEVEL PUBLIC ADMINISTRATION REFORM IN VIET NAM FROM GOOD GOVERNANCE PERSPECTIVE: BUSINESS ENVIRONMENT AND CITIZEN PARTICIPATION
	THE IMPACT OF OFFICIAL DEVELOPMENT ASSISTANCE (ODA) THROUGH THE FORESTRY PROJECTS ON THE FOREST AREAS IN VIETNAM: A PANEL DATA ANALYSIS FROM 2010 TO 2020
	SPATIAL DISTRIBUTION PATTERN OF POVERTY INCIDENCE IN THE PHILIPPINES
	PERCEPTION OF THE YOUNG GENERATION ON SAFE ABORTION IN THE PHILIPPINES
	THE INFLUENCE OF TRUSTS ON COLLEGE EDUCATION: CASE STUDY OF CHINA 2018 SURVEY DATA
	Relationship between the growth of textile industry and water pollution in China
	INCOME INEQUALITY BETWEEN GENDERS IN INDONESIA
	A BLINDER-OAXACA DECOMPOSITION ANALYSIS OF THE INDONESIA FAMILY LIFE SURVEY 5 (IFLS5)
	INTER-DISTRICT DISPARITY AND DISTRICT-LEVEL SPATIAL CLUSTERS/OUTLIERS IN EMPLOYMENT RATE IN INDONESIA 2015 AND 2018

Curriculum of MPMA Course 2023

Course Code	Course Name	Instructor	Credits	Semester	Year	Course Number	Notes
Elective Required Courses (4 credits)							
KT002	Master's Thesis Supervision 1	Kataoka, Mitsuhiko	2	Fall	1	MIB6011	
KT052	Master's Thesis Supervision 2	Kataoka, Mitsuhiko	2	Spring	1	MIB6011	
KT102	Master's Thesis Supervision 3	Kataoka, Mitsuhiko	2	Fall	2	MIB6011	
KT152	Master's Thesis Supervision 4	Kataoka, Mitsuhiko	2	Spring	2	MIB6011	
Elective Courses 1 (10 Credits and over required)							
KT201	Research Methodology	Yamada, Kyohei	2	Spring	1-2	MIB6211	
KT211	Applied Microeconomics	Lin, Ching-Yang	2	Fall 2	1-2	MIB6211	
KT221	Statistics for Economics and Management	Kataoka, Mitsuhiko	2	Fall 1	1-2	MIB6211	
KT231	Applied Econometrics	Jinnai, Yusuke	2	Spring	1-2	MIB6211	
KT241	Mathematics for Economics and Management	Kakinaka, Makoto	2	Fall	1-2	MIB6211	
KT251	Public Administration	Yamada, Kyohei	2	Fall	1-2	MIB6211	
KT261	Public Management	Nakajima, Manabu	2	Spring	1-2	MIB6211	
KT271	Public Finance and Budgeting	Lim, Seunghoo	2	Fall	1-2	MIB6211	
Elective Courses 2 (16 Credits and over required)							
Public Management							
KT301	Quantitative Methods for Policy Analysis	TBA	2	TBA	1-2	MIB6211	
KT311	Project Cycle Management	Fujita Nobuko Matsumoto Sachiko	2	Spring	1-2	MIB6211	
KT321	Public Private Partnership	Arakawa, Jun	2	Spring 2	1-2	MIB6211	
KT331	Local Government and Public Services	Canceled	2	Fall	1-2	MIB6211	Offered biennially
KT341	Public Policy	Lim, Seunghoo	2	Spring	1-2	MIB6211	
KT351	Japanese Politics	Yamada, Kyohei	2	Spring	1-2	MIB6211	Offered biennially
KT361	Security Sector Analysis and Management	TBA	2	TBA	1-2	MIB6211	
KT302	Environmental Policy and Disaster Management	Lim, Seunghoo	2	Spring 2	1-2	MIB6211	
Business							
KT371	Human Resource Management	Jung, Jiwon	2	TBA	1-2	MIB6211	
KT381	Investment and Asset Pricing	Suzuki, Makoto	2	Fall	1-2	MIB6211	
KT391	Financial Accounting and Reporting	TBA	2	TBA	1-2	MIB6211	
Economics							
KT401	Inequality and Poverty	TBA	2	TBA	1-2	MIB6211	
KT411	Development Planning	Kataoka, Mitsuhiko	2	Spring 1	1-2	MIB6211	
KT421	Agricultural Economics and Policy Analysis	Kotani, Koji	2	Spring	1-2	MIB6211	Intensive course
KT431	Environmental Economics and Policy Analysis	Kotani, Koji	2	Fall	1-2	MIB6211	Intensive course
KT441	International Finance	Kakinaka, Makoto	2	Spring 1	1-2	MIB6211	
KT451	Urban and Regional Economics	Kataoka, Mitsuhiko	2	Fall 2	1-2	MIB6211	
KT461	Japanese Economy	Kataoka, Mitsuhiko	2	Spring	1-2	MIB6211	
KT471	Development Economics	Kataoka, Mitsuhiko	2	Spring	1-2	MIB6211	
KT481	Asian Economic Development	Abe, Ryuichiro	2	Fall	1-2	MIB6211	
KT491	Applied Macroeconomics	TBA	2	TBA	1-2	MIB6211	
KT501	Cross Section and Panel Data Analysis	Wong, Chun Yee	2	Fall	1-2	MIB6211	
Special topics							
KT511	Special Topics in MPMA (International Trade)	Abdul, W.	2	Spring 2	1-2	MIB6211	
KT512	Special Topics in MPMA	TBA	2	TBA	1-2	MIB6211	
Optional Courses							
KT601	Advanced Seminar1	Kakinaka, Makoto	2	Fall	1-2	MIB6211	Other Registration
KT611	Advanced Seminar2	Kakinaka, Makoto	2	Spring	1-2	MIB6211	
KT621	Advanced Seminar3	Kotani, Koji	2	Fall	1-2	MIB6211	
KT631	Advanced Seminar4	Kotani, Koji	2	Spring	1-2	MIB6211	
KT641	Advanced Seminar5	Yamada, Kyohei	2	Fall	1-2	MIB6211	
KT651	Advanced Seminar6	Yamada, Kyohei	2	Spring	1-2	MIB6211	
KT661	Advanced Seminar7	Lim, S.	2	Fall	1-2	MIB6211	
KT671	Advanced Seminar8	Lim, S.	2	Spring	1-2	MIB6211	

Faculty list of MPMA Course



KATAOKA, Mitsuhiro

Professor

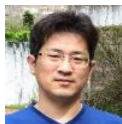
Ph.D. in International Development, Graduate School of International Development, Nagoya University, 2004

Courses: Statistics for Economics and Management, Development Economics, Urban and Regional Economics, Japanese Economy, Development Planning

Research Interests: Development Economics, Spatial Data Analysis, Income Inequality, Productivity Analysis, Regional Development

Major publications:

- Kataoka, M., & Darangina A. T. (2023). Imperial Manila syndrome in poverty reduction: a province-level spatial distribution analysis. *Asia-Pacific Journal of Regional Science*. doi.org/10.1007/s41685-023-00275-w
- Kataoka, M. (2022). Cyclical shocks and spatial association of Indonesia's district-level per capita income. *Asian Economic Journal* 36(3): 261-287 doi:10.1111/asej.12277
- Kataoka, M. (2022). Perspiration versus inspiration: sources of national and provincial output growth in Indonesia [1990–2015] using province-level non-parametric frontier analysis. *Asia-Pacific Journal of Regional Science*, 6(1), 113-139. doi:10.1007/s41685-021-00222-7
- Mendez, C., & Kataoka, M. (2021). Disparities in regional productivity, capital accumulation, and efficiency across Indonesia: A club convergence approach. *Review of Development Economics*, 25(2), 790-809 doi:10.1111/rode.12726
- Kataoka, M. (2020). Total factor productivity change in Indonesia's provincial economies for 1990–2015: Malmquist productivity index approach. *Letters in Spatial and Resource Sciences*, 13(3), 233-243. doi:10.1007/s12076-020-00256-z



KAKINAKA, Makoto

Visiting Professor

Ph.D. in Economics, Cornell University, 2006

Courses: Mathematics for Economics and Management, International Finance

Research Interests: International Economics, Financial and Banking Systems, Public Choice and Policy

Major publications:

- Iraman, E., Ono, Y., Kakinaka, M. (2022). Tax compliance and social desirability bias of taxpayers: Experimental evidence from Indonesia. *Journal of Public Policy* 42, 92-109.
- Mustafa, A.A., Lin, C.-Y., Kakinaka, M. (2022). Detecting market pattern changes: A machine learning approach. *Finance Research Letters* 47, 102621.
- Shrestha, S., Kotani, K., Kakinaka, M. (2021). The relationship between trade openness and government resource revenue in resource-dependent countries. *Resources Policy* 74, 102332.
- Hulugalla, N., Yamada, K., Kakinaka, M. (2021). Personal social capital and voluntary participation in the Village Development Programme in rural Sri Lanka. *Journal of International Development* 33, 803-825.
- N'dri, L.M., Kakinaka, M. (2020). Financial inclusion, mobile money, and individual welfare: The case of Burkina Faso. *Telecommunications Policy* 44, 101926.
- Htwe, N.N., Lim, S., Kakinaka, M. (2020). The coevolution of trade agreements and investment treaties: Some evidence from network analysis. *Social Networks* 61, 34-52.
- Hlaing, S.W., Kakinaka, M. (2018). Financial crisis and financial policy reform: Crisis origins and policy dimensions. *European Journal of Political Economy* 55, 224-243.



KOTANI, Koji

Visiting Professor

Ph.D. in Agricultural Economics, Cornell University, 2005

Courses: Agricultural Economics and Policy Analysis, Environmental Economics and Policy Analysis

Research Interests: Environmental and Natural Resource Management and Agricultural Economics

Major publications:

- Raja Timilsina, Koji Kotani, Yoshinori Nakagawa, Tatsuyoshi Saijo (2023). Does being intergenerationally accountable resolve intergenerational sustainability dilemma? *Land Economics*, (Forthcoming)
- Pankaj Koirala, Koji Kotani, Shunsuke Managi (2022). How do farm size and perceptions matter for farmers' adaptation responses to climate change in a developing country? Evidence from Nepal. *Economic Analysis and Policy*, 74 188-204.
- Raja Timilsina, Koji Kotani, Yoshinori Nakagawa, Tatsuyoshi Saijo (2022). Intragenerational deliberation and intergenerational sustainability dilemma. *European Journal of Political Economy*, 73 102131.
- Khatun Asma, Shibly Shahrier, Koji Kotani (2021). Cooperation and cognition gaps for salinity: A field experiment of information provision in urban and rural areas of Bangladesh. *Journal of Cleaner Production*, 311 127562.
- Mostafa Shahen, Koji Kotani, Tatsuyoshi Saijo (2021). Intergenerational sustainability is enhanced by taking the perspective of future generations. *Scientific Reports*, 11 2437.



LIM, Seunghoo

Visiting Professor

Ph.D. in Public Administration, Florida State University, 2015

Courses: Public Finance and Budgeting, Public Policy, Environment Policy and Disaster Management

Research Interests: Public Policy, Public Management

Major publications:

- Myomin, T., Lim, S. (2022) The emergence of multiplex dynamics between information provision ties and rescue collaboration ties in disaster response settings: A longitudinal network analytic approach to flooding cases in Myanmar. *Natural Hazards*.
- Tinivata, E. V., Lim, S. (2022) Which target group receives more responses from the government through a citizen participation policy?: The Fiji open-door policy based on a social construction framework. *Public Performance & Management Review* 45(2): 352-377.
- Dao, M. T., Lim, S. (2022) Fear of disasters within the risk communication network of foreign students in Japan amid the COVID-19 pandemic crisis: A cohort design. *International Journal of Disaster Risk Reduction* 71: 102808.



YAMADA, Kyohei

Visiting Professor

Ph.D. in Political Science, Yale University, 2013

Courses: Research Methodology, Public Administration, Local Government and Public Services, Japanese Politics

Research Interests: Local Government, Intergovernmental Relations, Japanese Politics and Government

Major publications:

- Byambaa, M., Yamada, K. (2023). Descriptive social norms and herders' social insurance participation in Mongolia: A survey experiment. *Journal of International Development*, 35(1), 143–162.
- Yamada, K., Park, G. (2022). Aging and the politics of monetary policy in Japan. *Japanese Journal of Political Science*, 23(4), 333–349.
- Susmerano, E. B., Yamada, K. (2022). Revisiting auxiliary social services for persons with disability: The Philippines case. *International Journal of Social Welfare*, 31(2), 187–202.
- Hulugalla, N., Yamada, K., Kakinaka, M. (2021). Personal social capital and voluntary participation in the Village Development Programme in rural Sri Lanka. *Journal of International Development*, 33(5), 803–825.
- Yamada, K., Arai, K. (2021). Do boundary consolidations alter the relationship between politicians and voters? The case of municipal mergers in Japan. *Local Government Studies*, 47(4), 519–545.

<List of Part-time Lecturers>

ARAKAWA, Jun

Aichi Prefectural Government Office
MA in International Relations, International University of Japan, 1989
Candidate for Ph.D., Keio University
Courses: Public Private Partnership

WONG, Chun Yee

Assistant Professor, International University of Japan
PhD in Economics, the University of New South Wales, 2015
Courses: Cross Section and Panel Data Analysis

JINNAI, Yusuke

Associate Professor, International University of Japan
Ph.D. in Economics, University of Rochester, 2013
Courses: Applied Econometrics

LIN, Ching-Yang

Associate Professor, International University of Japan
Ph.D. in Economics, University of Wisconsin-Madison, 2010
Courses: Applied Microeconomics

MYOE, Maung Aung

Professor, International University of Japan
Ph.D. in Political Science and International Relations,
Australian National University, 2000
Courses: Security Sector Analysis and Management

SUZUKI, Makoto

Associate Professor, Bunkyo University
Ph.D. in Economics, Saitama University, 2012
Courses: Investment and Asset Pricing

ABE, Ryuichiro

Visiting Lecturer, University of Tokyo, Waseda University,
Takusyoku University
M.A. in Advanced Social and International Studies,
University of Tokyo, 2001
Courses: Asian Economic Development

JUNG, Jiwon

Assistant Professor, International University of Japan
Ph.D. in Public Administration and Policy
Arizona State University, 2020
Courses: Human Resource Management

FUJITA, Nobuko

Executive Director, Foundation for Advanced Studies on International
Development
Ph.D. in Policy and Management
Doshisha University, 2010
Courses: Project Cycle Management

MASTUMOTO, Sachiko

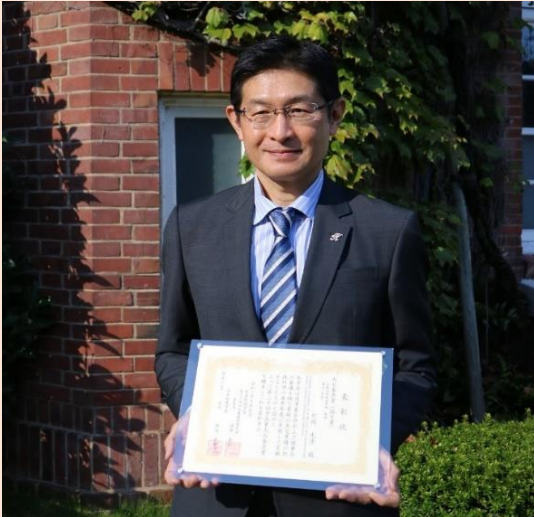
Deputy Director, Foundation for Advanced Studies on International
Development
M.A. in Governance and Democracy
Erasmus University Rotterdam, 2007
Courses: Project Cycle Management

WAHEED, Abdul

Professor, University of Karach
Ph.D. in Economics-International Development, Nagoya University,
Japan, 2005
Course: Special Topics in MPMA (International Trade)

Prof. KATAOKA receives the Oishi Yasuhiko Award (Outstanding Paper Award) from the Japan Section of the Regional Science Association International (JSRSAI)

November, 2021



Prof. Mitsuhiro KATAOKA of the College of Business receives the Oishi Yasuhiko Award (Outstanding Paper Award) from the Japan Section of the Regional Science Association International (JSRSAI).

Prof. KATAOKA has been awarded the 30th Oishi Yasuhiko Award (Outstanding Paper Award) by the JSRSAI for his paper entitled, "Inequality convergence in inefficiency and interprovincial income inequality in Indonesia for 1990–2010" in the *Asia-Pacific Journal of Regional Science*. This award is granted annually to the authors of research papers who have made significant contributions to the advancement of the field of Regional Science. The award honors the Professor Emeritus of the University of Tokyo Yasuhiko OISHI's great achievement.

The awarded study employs the two methods of non-parametric Data Envelopment Analysis and the additive inequality decomposition technique to explore the causal factors—demographic, productivity, and efficiency factors—contributing to interprovincial income inequality in Indonesia for 1990–2010. Moreover, this study found efficiency convergence across 26 provinces, which is mainly attributable to the decline in interprovincial income gaps.

Kataoka, M. Inequality convergence in inefficiency and interprovincial income inequality in Indonesia for 1990–2010. *Asia-Pac J Reg Sci* 2,297–313 (2018).

Field Trip in 2022 Winter

April, 2022

We went to Echigoyuzawa, which is a snowy mountain resort and just 90 minutes away from Tokyo by Shinkansen bullet train, on an overnight field trip with 11 students from China, Kenya, the Philippines, and Vietnam in March.

We had this overnight trip for the first time in two years. We paid good attention to avoiding the infection risk during the trip.

On the first day, we could enjoy the beautiful scenery and the historical atmosphere at "Untoan", which is an old temple, and its origin is related to the Fujiwara clan. We learned the culture and history of Japan there.

After that, we stopped at the "Michi no Eki", which means a roadside station. This is a government-designated rest stop run by the local government and is usually located on the national roads equipped with parking lots, restrooms, restaurants, and souvenir shops selling local products. The local farmers and retailers operate the business activities under the government-designated market system. We learned the roles of local initiatives in local business activities, associated with "One Village One Product" movement.

Our main purpose on the second day was to experience skiing as a cultural exchange. Same as the last year we had a special guest, Dean Yamaguchi. The professors and administrative staff turned to ski instructors on this trip and we became better acquainted with each one of the students. Our "learning by doing" teaching policy is applied not only to the classroom.

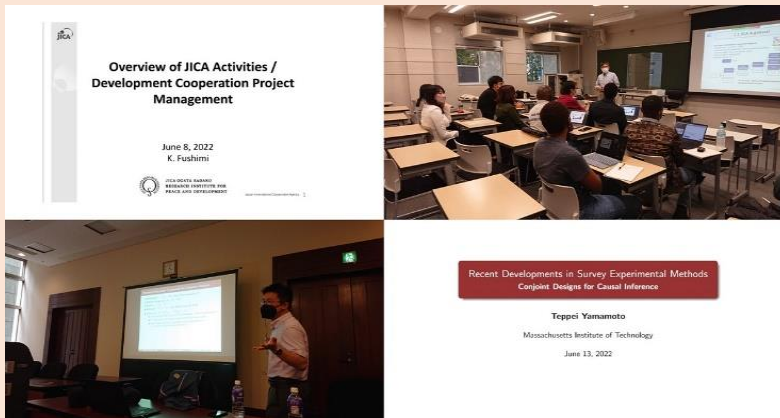
It was a short time though, they really enjoyed the activity among friends and faculty members.



Event & News in 2021-2022

Special Lectures inviting two experts

June, 2022



We invited two speakers from the government sector and academia to deliver special lectures for our MPMA program students.

Mr. Katsutoshi FUSHIMI, a highly experienced ODA expert from Japan International Cooperation Agency (JICA), introduced a new project management approach, Problem-Driven- Iterative- Adaptation (PDIA) in the field of the official development aid. This is a hands-on problem-solving tool, more actively

involving local actors who notice problems, propose solutions, and work iteratively to achieve sustainable institutional reform. His in-class and online hybrid lecture drew over 20 attendees, including graduate students of Master of Social Development and Administration (MSDA).

Professor Teppei Yamamoto, a young leading political scientist, is from Massachusetts Institute of Technology (MIT). His lecture, entitled "Recent Developments in Survey Experimental Methods", drew 32 attendees, including students and faculty members of the College of Business.

He introduced the basic framework of survey experimental methods and then shared one of his recent empirical research outputs, using the conjoint measurement analysis to explore how voters make decisions when faced with multi-dimensional choices. Both lectures, which stimulated the motivation of the graduate students and faculty members in pursuing their studies and research, were followed by an active discussion.

Graduation Ceremony 2022

September, 2022

The Graduation Ceremony for the sixth batch of MPMA students as well as other Master's course students was held at Ikebukuro campus on September 16. We paid a good attention for conducting the ceremony in consideration of the current situation, so we restricted the participants as a minimum size and allowed to attend only for graduates and a few faculty members.



All they have earned is not only the Degree they were conferred but also the strength to accomplish great works under the difficult circumstances. We were so happy and honored to have them as a Rikkyo's student.

A bright future will wait for them!