

Voice 01



Dr. Meng Ye

Lecturer, School of Public Management and Liberal Arts,
Dalian Maritime University, China
Completed the GSPS Doctoral Program in September 2019

I have an indissoluble bond with Ritsumeikan University that I visited its Osaka Ibaraki Campus as a conference speaker in 2015, which impressed me deeply with its friendly campus environment. Immediately, I decided to pursue my doctoral degree in Ritsumeikan University.

As a rapidly developing country, China faces problems such as effective utilization of abandoned land in urban-rural fringe.

Meantime, with an increase in the leisure time and income, urban residents have a demand for conducting planting activities as a leisure way.

From this point of view, my research connected these two factors together and was committed to help local governments to integrate allotment gardening into urban planning and urban land use systems. Ritsumeikan University helped me a lot in the three-year doctoral study.

It offered me various financial aid to support my field trips in China and presentations at overseas conference, the professors here taught me professional knowledge on policymaking, spatial analysis and so on, and the staff here facilitated my life and study.

I sincerely appreciate this university for giving me such a wonderful and unforgettable study experience.

Therefore, Ritsumeikan University is definitely the preferred choice for those consider studying for a degree in Japan, outperforming many universities in aspects of faculty quality, learning environment, and geographical location.

Voice 02

My research theme is about alternative infrastructure development financing in Indonesia.

The decentralization system implemented in the country makes local governments have more tasks, meaning that more funds are also needed.

Therefore, alternative development financing is urgently needed by local governments to accelerate the development as well as to minimize their dependency on the central government.

My study focuses on one of the alternatives broadly implemented in some countries, namely municipal bonds.

By utilizing a descriptive approach, it tries to find out the best way to encourage the issuance of municipal bonds to become an alternative development financing in Indonesia.

As one of the best private universities in Japan, Ritsumeikan University provides not only excellent facilities for studying and conducting research but also a friendly campus environment that keep student life joyful.

Moreover, Ritsumeikan University has the Research Project program that involves interdisciplinarity. By having the experts in each field of study, I had the opportunity to deepen my knowledge and to discuss my research from various points of view, which broadened my comprehension.

Eventually, I believe that Ritsumeikan University, and Japan in general with its fascinating places and culture, is more than a pleasant place to study and to have a wonderful experience in life.



Mr. Muhammad Adam Hikmawan

Public Official, Semarang City Government, Indonesia
Completed the GSPS Master's Program in September 2020

RITSUMEIKAN UNIVERSITY GRADUATE SCHOOL OF POLICY SCIENCE



Social Management Cluster

Environment and Development Cluster

Public Policy Cluster

[Contact]

**Administrative Office of the Graduate School of Policy Science,
Ritsumeikan University**



1st floor, Building A, Osaka Ibaraki Campus / 2-150 Iwakura-cho,
Ibaraki, Osaka 567-8570 JAPAN
Tel: +81-72-665-2080 Fax: +81-72-665-2089
E-mail: gsp-s-adm@st.ritsumei.ac.jp <https://en.ritsumei.ac.jp/gsp-s/>



RITSUMEIKAN UNIVERSITY
GRADUATE SCHOOL OF
POLICY SCIENCE



Developing practical policy skills through direct involvement in the real world

Policy science is a new discipline that is both interdisciplinary and practical. A unique feature of the Graduate School of Policy Science's curriculum is the Research Project, which aims to create an intellectual space for policy design in which faculty members with different areas of expertise and graduate students with diverse research motivations and topics collaborate to solve real-world policy issues, all while constantly traversing the space between the field and basic theory.

Three types of Cluster: The hallmark of policy science

The Research Project aims to create an intellectual space for policy theory and research in which faculty members with different areas of expertise and graduate students with diverse research motivations and topics collaborate to solve real-world policy issues, all while constantly traversing the space between those policy issues and applications in the field.

Public Policy Cluster

In this cluster, students analyze the formation, decision-making, and execution processes of policies in the public sphere, including politics, public administration, and civil society, and they conduct research with a view to possibly expanding upon these processes in the future. Given that the contemporary public domain is strongly influenced by global society, students also verify issues from an international perspective.

Environment and Development Cluster

Students conduct theoretical and empirical research on the environment, energy, and cities to promote the development of a sustainable society. While actively integrating the knowledge of the social and natural sciences necessary to advance these interdisciplinary studies, this cluster aims to build practical policy science rooted in field research.



Social Management Cluster

In this cluster, students engage in analysis related to economics, management, welfare, and other areas of economics and society. Students also conduct research on the companies, NPOs, municipalities, and other organizations that play a role in these areas. Students engage in comprehensive research on contemporary economics and society, while keeping in mind the social systems and social networks that generate national and regional policies.

Policy Science Research Courses

Public Policy Courses

Courses are arranged so that students will acquire insight into the policy formation process. The policy formation process is one of consensus, and the social rationality of policies and measures is the subject of these courses. Courses on offer focus primarily on political science, public administration, public philosophy, and legal policy studies.

Environment and Development Courses

Courses on offer encompass areas such as the environment, energy, cities, and disaster prevention. These courses focus on environmental science, urban engineering, and planning theory, and while they emphasize mastery of scientific rationality, they are unique in that they are rooted in real-world social phenomena.

Social Management Courses

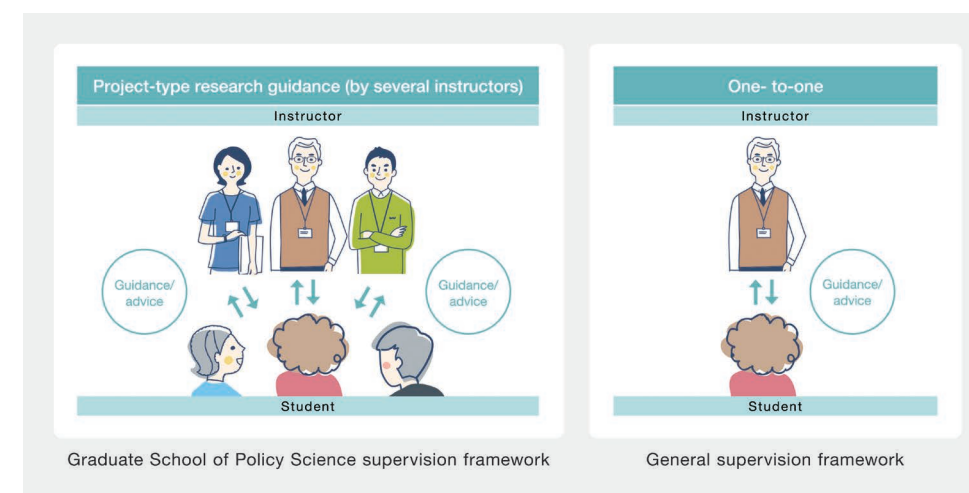
Courses are offered to ensure that students can analyze the economy, society, and organizations and clarify the interactions thereof. These courses revolve around the fields of economics, business administration, and sociology, and as they master these fields, students tackle various issues facing society by advancing their exploration of economic rationality.

Common Courses

Common Courses consist of those designed to ensure that students acquire the fundamentals of policy science as a synthesis of academic knowledge, and those that instill in them the skills needed regardless of the research area or research topic. Students will acquire the basic theories and basic analytical methods of the new academic discipline of policy science.

Policy issue-driven project-based research supervision framework

The Graduate School of Policy Science employs project-based research supervision. This is a method where cross-disciplinary faculty member joint research teams are organized for each area or theme and graduate students participate in the joint research process of their respective team. In the Research Project courses, rather than having one faculty supervisor specialize in one area of expertise, we take a team approach to supervision, where multiple faculty members with common interests in the area or theme but different academic backgrounds supervise the research of the graduate students.



Message from the Dean



YOSHIDA Tomohiko
Dean
Graduate School of Policy Science

Ritsumeikan University's Graduate School of Policy Science (GSPS) was established in 1997 with a view to develop students' essential research skills and practical competence to correctly understand the policy issues that we face in today's society and to work out for optimal solutions.

Policy science is a discipline that explores solutions to various policy issues that affect us while pursuing the innovation of social and natural sciences. Through policy science study, the GSPS aims to train both new types of academic researchers with practical skills and competent policy practitioners.

Each of the policy issues has various social and natural aspects. In order to understand and promote solutions to these issues, research achievements in a wide range of academic fields such as political science, public administration, law, economics, business administration, urban planning and environmental engineering must be served for studies in policy science. Policy science has a characteristic of being an integrated science, which requires interdisciplinary research, encompassing many different academic disciplines. In this increasingly complex world, the importance of the study in these fields are growing. With this comprehensive nature,

you will widen and deepen each of the specialized fields that will ultimately contribute to the development of the existing academic field itself.

As a research institution to study the solutions to policy issues, the GSPS places special emphasis on the interaction with real society. To be specific, the GSPS has research sites called "Regional Co-Creation Studies" in local government and social institutions in several regions where graduate students are given opportunities to observe actual policy scenes. We are going to register the achievements of the field research in our "Policy Base" database and make such data globally available. In this way, graduate students

of the GSPS can contribute to the enhancement of this database through your research activities.

The GSPS also offers a project-style joint research program, which was conceived in consideration of the integrated nature of policy science. This program is called "Research Project" in the Master's Program and "Research Seminar" in the Doctoral Program. Under these programs, several faculty members conduct research activities jointly with graduate students and offer research guidance to you.

Another feature of our graduate school is its internationality. Many international students from around the world are studying at the GSPS.

The GSPS offers programs in both English and Japanese, and through the classes, events, etc. students are actively engaged in international exchanges. It also provides socio-cultural diverse students valuable opportunities to explore new fields of study by broadening each other's horizons.

By carrying out policy science research and making the most of these opportunities unique to the GSPS, we hope to train high-caliber personnel capable of making and conducting optimal solutions to all social issues.

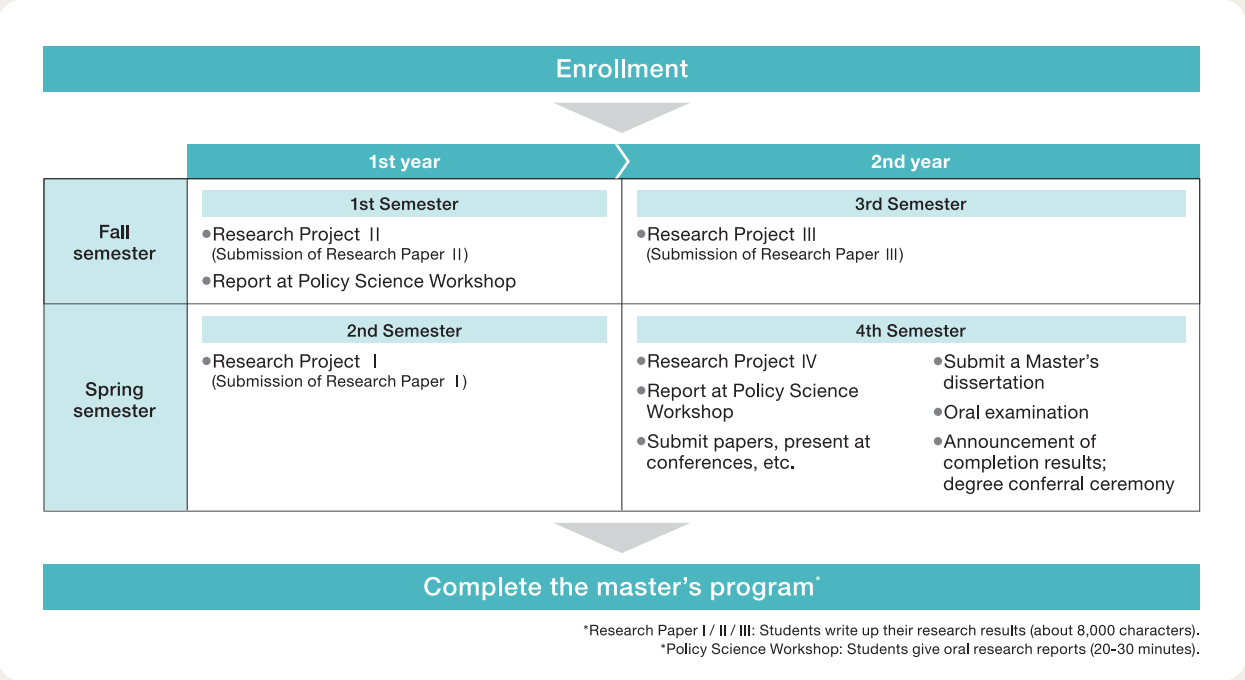
CURRICULUM

Master’s Program Curriculum

The master's program in the Graduate School of Policy Science offers a curriculum with a two-year research process leading to the conferral of a master's degree by way of organized supervision. Students not only take courses related to research methods and courses related to their research topics in one of the three clusters of Public Policy, Environment and Development, and Social Management, they also receive research supervision in the jointly offered Research Project courses and present their research in the Policy Science Workshops attended by faculty members from various fields, thereby strengthening their research from multiple angles. With this kind of curriculum, students will develop the research capacity and practical skills that are indispensable for accurately understanding the policy issues facing contemporary society and for devising appropriate solutions thereto. Furthermore, they compile their research findings into a master's thesis.



[Sample Course Model]

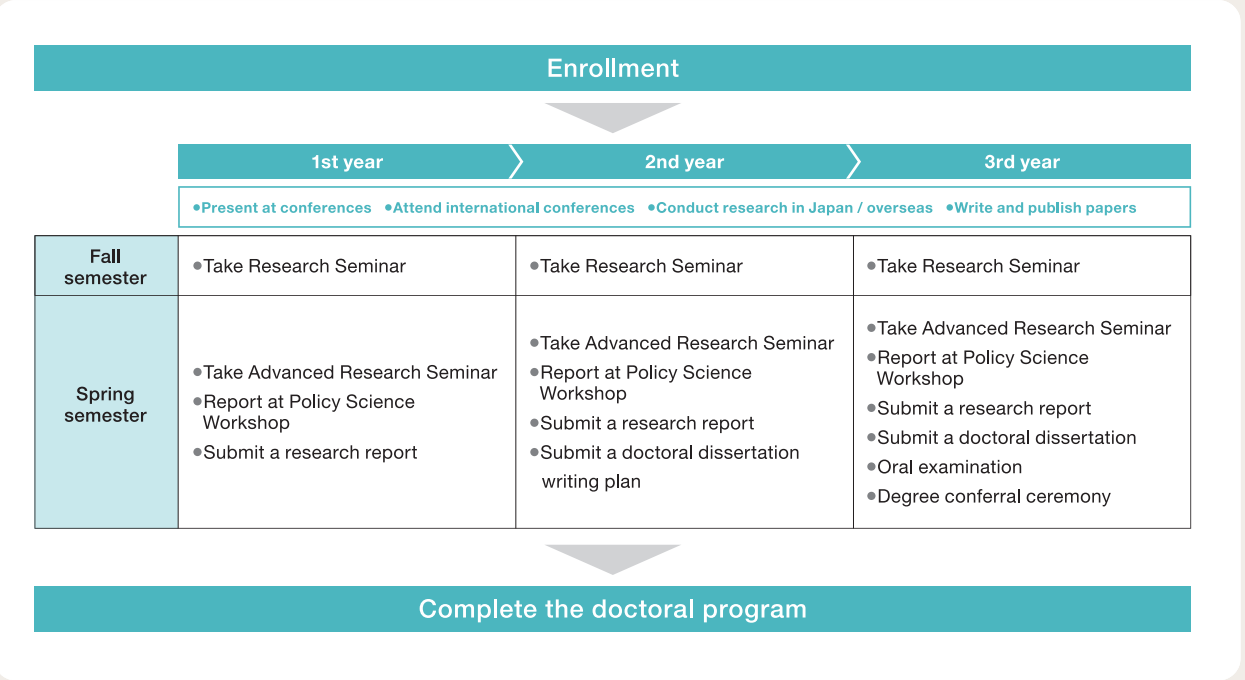


Doctoral Program Curriculum

The doctoral program in the Graduate School of Policy Science offers a curriculum with a three-year research process leading to the conferral of a doctoral degree by way of systematic, organized supervision. Students undergo systematic supervision by participating in joint research projects (course titles: Research Seminar and Advanced Research Seminar), and they strengthen their research from various angles by giving presentations at the Policy Science Workshops attended by faculty members from various fields. In the doctoral program, students not only hone the advanced research skills they need to tackle a variety of social issues, but they also develop the research process planning and management skills that are indispensable for independent policy science researchers. Furthermore, they compile their research findings into academic articles and a doctoral dissertation.



[Sample Course Model]



Master’s thesis/Doctoral dissertation titles (excerpted)

Master’s thesis titles

- A Case Study on Effects of CHSE Policy for Tourism Recovery During Covid-19 Pandemic in Restaurant Business in Great Bandung Area, West Java Province, Indonesia [2022]
- A Comparative Gaming Simulation Study as a Tool to Enhance Community-Based Disaster Risk Reduction Among Foreign Residents and Japanese Locals [2022]
- Impact of politics on education in multi-cultural societies of South-Asia: Emphasizing India [2022]
- How social support and resilience prevent suicidal thought among rural older adults: An example of a Chinese case [2022]
- Behaviour and Intention Analyses of Plastic Waste Separation at Source in Japan [2022]
- The Power Arena: Exploring the Persistence of Land Reallocation in Village X of Shandong [2022]
- Comparative Study of Ghana and Japan Fiscal Decentralization Systems and the Implication for Local Governance [2022]
- THE EFFECT OF PADDY LAND CONVERSION, LAND OWNERSHIP, AND AGRICULTURAL TECHNOLOGY ON FARMERS POVERTY IN INDONESIA [2022]
- Effectiveness of Industrial Estates as Designated Agglomerations in Indonesia: Case Study of Weda Bay Industrial Park in Halmahera Tengah Regency [2022]
- Utilization of the One Map Policy on Land Registration to Enhance Regional Development Case Study: Fakfak Regency, West Papua Province, Indonesia [2022]
- Household Determinants of Secondary Enrolments: A Case Study of District Hafizabad, Punjab, Pakistan [2021]

- Participation in Waste Management by the People in Indonesia (Implementation of National Policy and Strategy For Municipal Household Waste and Domestic Waste Management in West Bangka Regency) [2021]
- Educational Assistance on Poor Student in Indonesia: A Case Study at Junior High School in Hinai and Tanjung Pura District, Langkat Regency [2021]
- The Role of Financial Literacy, Self-Control, and Living Apart Together on Retirement Readiness: A Case Study of Pre- Retirees of the Audit Board of the Republic of Indonesia [2021]
- How to Avoid Inconsistencies among Government Plans for Border Area -Application of Analytic Hierarchy Process (AHP) in Border Area Development Programs- [2021]
- The Evaluation of e-KTP Program Implementation in Indonesian Local Government: A Comparative Study in Metro Municipality and Pringsewu Regency [2021]
- Deregulation, Competition and Liberalization: Understanding Japan's Air Transport Policy [2020]
- Environmental Policy Implementation in Road Infrastructure Management: A case study of Western Indonesia National Road Improvement Project (WINRIP) [2020]
- EVALUATION OF MONITORING AND FOLLOW-UP ON AUDIT RECOMMENDATIONS IN CENTRAL MINISTRIES IN INDONESIA [2020]
- THE SOCIAL CAPITAL OF THE TRADITIONAL MARKET IN FACING THE COMPETITION OF THE MODERN MARKET IN SIJUNJUNG REGENCY [2020]
- Municipal Bonds as Alternative Infrastructure Development Financing in Indonesia [2020]

- FACTORS INFLUENCING THE COMMODIFICATION IN CULTURAL HERITAGE TOURISM IN INDONESIA [2020]
- PARTICIPATORY AND TECHNOCRATIC ASPECTS OF PORT DEVELOPMENT IN YOGYAKARTA SPECIAL PROVINCE [2020]
- Implementation of Forest Moratorium Policy: Case Study of Deforestation and Forest Degradation in Papua Province, Indonesia [2020]
- ENHANCING EARTHQUAKE COPING CAPACITY OF MALAYSIAN SCHOOL STUDENTS THROUGH GAMING SIMULATION [2020]
- Research about Japanese Legalization of Public Service Ethics Practice — Centered on the National Public Service Ethics Act [2019]
- Analysis of Employee Competence by using the Concept of SARCoN in Nuclear Energy Regulatory Agency (BAPETEN) [2019]
- Comparative Study on Faoreign Assistance Policy of Japan and Taiwan to Solomon Islands [2019]
- A Comparative Study on Local Economic Revitalization Between Thailand and Japan [2019]
- The role of civil society in the process of democratization in Senegal [2019]
- A Case Study on Citizen Participation Factors in Musrenbang (Development Planning Forum) in Batam Municipality, Indonesia [2019]
- Security competition and the security dilemma in East Asia, 1992-2017 [2019]

(* Number in parenthesis indicates the year when the degree was conferred.)

Doctoral dissertation titles

- An Analysis of Bangladesh's Ready-Made Garment Sector: Its Competitiveness, Sustainability, and Compliance [2021]
- A Study on the Influences of Social Interaction on Housing Relocation from Slum to Public Housing: A Case Study of Greater Jakarta, Indonesia. [2021]
- A Study Toward More Accessible and Suitable Spatial Information for Risk Communication in Indonesia: Focusing on Supply and User Side [2021]
- A Study on the Competitiveness of Indonesian Historical Post-Mining Cities as Tourist Destinations [2021]
- A Study of International Comparison on State-sponsored Legal Aid in Common Law Jurisdictions for the Quality Implementation of Legal Aid System in Myanmar [2020]
- Corporate Social Responsibility in Developing Country: A New Approach for Understanding the Governments' Intermediary Role of Quasi-redistribution in Indonesia [2020]
- An Analysis of Indonesian Female Labor Migration: A Case of Indramayu Regency, West Java Province, Indonesia [2019]
- A Study on Conventional Motorcycle Taxi's Demand in the Urban Fringes of Outer Metropolitan Area: Case Study in West Java, Indonesia [2018]
- The Analysis of Government Spending on Education: Theory and Empirical Evidence from the Districts in Indonesia [2018]
- Inclusion and Exclusion of ZAINICHI Koreans by the Government of South Korea: Focusing on the Era of Lee Seung-man Regime [2017]
- A Study on Policies toward Stranded Tourists by Public Support of Disaster Response Framework in Concentrative Tourism after Great Earthquakes: A Case Study of World Cultural Heritage, Himeji Castle [2017]

(* Number in parenthesis indicates the year when the degree was conferred.)

FACULTY

Detail here ▼
“faculties in graduate school of policy science in Ritsumeikan University”
<https://en.ritsumeikai.ac.jp/gsp/introduce/faculty/>



Public Policy Cluster

KAMIKUBO Masato Professor ● In charge of master program and doctoral program Specialty Contemporary Japanese politics, policy-making process, international political economy	KIDO Hideki Professor ● In charge of master program and doctoral program Specialty Government, comparative politics, inter-governmental relations	TSAY Shioh-Ching Professor ● In charge of master program and doctoral program Specialty Administrative law, comparative administrative law, local autonomy law, Asian law (Taiwanese law/Chinese law)	TABAYASHI Yo Professor Specialty Comparative studies in culture, research on American literature/culture
HICKS, Kimberley Anne (Salem) Professor ● In charge of master program and doctoral program Specialty Gender studies, feminist theory, digitalized society, diversity governance	FUJIWARA Chiemi Professor ● In charge of master program Specialty Japanese language education, sociolinguistics	MIYAWAKI Noboru Professor ● In charge of master program and doctoral program Specialty International politics, international public policy, security policy	MORI Michiya Professor ● In charge of master program and doctoral program Specialty Public Administration, Theories of the Policy Process
KAKUMOTO Kazumasa Associate Professor ● In charge of master program Specialty Law (civil law, information law)	NARITA Hiroki Associate Professor ● In charge of master program Specialty Political philosophy, contemporary political theory, critical theory	FUJII Tadasuke Associate Professor ● In charge of master program and doctoral program Specialty Politics	MORI Takatomo Associate Professor Specialty Intelligent Informatics, Sensitivity Informatics/Soft Computing, Perception Information Processing/Intelligent Robotics
SHIGEMORI Tamihiro Fixed-term Teaching Staff (Tokubetsu Ninyo Teaching Staff) Specialty Political Thought	MABUCHI Masaru Fixed-term Teaching Staff (Tokubetsu Ninyo Teaching Staff) ● In charge of master program and doctoral program Specialty Public administration, public policy analysis	KATSUMURA Makoto Fixed-term Teaching Staff (Tokumei Teaching Staff / Professor) ● In charge of master program and doctoral program Specialty Political Science (Japanese political history)	YASUE Noriko Fixed-term Teaching Staff (Tokubetsu Ninyo Teaching Staff) ● In charge of master program and doctoral program Specialty EU Studies, International Relations, Politics

Environment and Development Cluster

INOUCHI Munenari Professor ● In charge of master program and doctoral program Specialty Support for life-reconstruction of disaster survivors, Behavioral disaster management, Disaster prevention planning, Administrative risk management, DX design science for resilience	UEHARA Takuro Professor ● In charge of master program and doctoral program Specialty Ecological economics, systems science	KANEGAE Hidehiko Professor ● In charge of master program and doctoral program Specialty Planning theory, Regional Science, Disaster mitigation for urban cultural heritage, Simulation and Gaming	KOSUGI Takanobu Professor ● In charge of master program and doctoral program Specialty Environmental policy, energy science, social systems engineering
SHIKI Kimiko Professor ● In charge of master program and doctoral program Specialty Urban planning, housing policies, urban space and poverty problems	NAKANO Katsuyuki Professor ● In charge of master program and doctoral program Specialty Environmental management, environmental impact assessment	YOSHIDA Tomohiko Professor ● In charge of master program and doctoral program Specialty Urban planning	ANDO Yuta Associate Professor ● In charge of master program Specialty Sustainability Science, Science Communication
SAUCEDO SEGAMI, Daniel Dante Associate Professor ● In charge of master program Specialty Public archaeology, Andean archaeology, cultural anthropology, science and technology diplomacy, Spanish language education	SAKURAI Ryo Associate Professor ● In charge of master program and doctoral program Specialty Human dimensions of wildlife management, evaluation of environmental education programs, biodiversity conservation, environmental sociology, citizen science	TOYODA Yusuke Associate Professor ● In charge of master program and doctoral program Specialty Community-based disaster management, disaster management education, disaster management for tourism	YAMADE Miya Associate Professor ● In charge of master program Specialty Urban planning, Community design
ISHIHARA Kazuhiko Fixed-term Teaching Staff (Tokubetsu Ninyo Teaching Staff) ● In charge of master program and doctoral program Specialty Urban planning, community development	ZHOU Weisheng Fixed-term Teaching Staff (Tokubetsu Ninyo Teaching Staff) ● In charge of master program and doctoral program Specialty Energy/environmental policy		

Social Management Cluster

ISHIKAWA Ibuki Professor ● In charge of master program and doctoral program Specialty Business Administration (Strategic Management, Organization theory)	INABA Mitsuyuki Professor ● In charge of master program and doctoral program Specialty Learning Science, Cognitive Science	IIDA Miki Professor ● In charge of master program and doctoral program Specialty Cultural studies, gender history	OTSUKA Yoko Professor ● In charge of master program and doctoral program Specialty Welfare policy, gender studies
ODA Hisaya Professor ● In charge of master program and doctoral program Specialty Development economics, South Asian area studies	KISHI Michio Professor ● In charge of master program and doctoral program Specialty Public economy, public management, and labor policy	SAKANISHI Akiko Professor ● In charge of master program and doctoral program Specialty Regional economics, urban economics, labor economics, economic policy	SAKURAI Masanari Professor ● In charge of master program and doctoral program Specialty Sociology
HATTORI Toshiyuki Professor ● In charge of master program and doctoral program Specialty Management accounting, management strategy analysis	FUNAHASHI Toyoko Professor ● In charge of master program and doctoral program Specialty Global marketing, retailing in the Philippines, BoP business	MORI Hiroyuki Professor ● In charge of master program and doctoral program Specialty Public finance, urban economics	KOJIMA Naoko Associate Professor ● In charge of master program Specialty Foreign language education, applied linguistics, intercultural communication
SCHROEDER Martin Associate Professor ● In charge of master program and doctoral program Specialty Business administration, global value chains, auto industry	TAKASHINO Nina Associate Professor ● In charge of master program and doctoral program Specialty Development economics, agricultural economics, gender studies	TAMURA Masaoki Associate Professor ● In charge of master program and doctoral program Specialty Microeconomics, Health Economics, Statistics	FUKUI Haruna Associate Professor ● In charge of master program Specialty Foreign language education, applied linguistics
AZUMA Yoshifumi Fixed-term Teaching Staff (Tokubetsu Ninyo Teaching Staff) ● In charge of master program and doctoral program Specialty International Development, Demography and Southeast Asian Studies (Indonesia, Cambodia, and East Timor in my duty stations), post-conflict society, Peace Studies.	NISHIMURA Yozo Fixed-term Teaching Staff (Tokubetsu Ninyo Teaching Staff) ● In charge of master program and doctoral program Specialty Finance theory, international finance theory, international economics		

